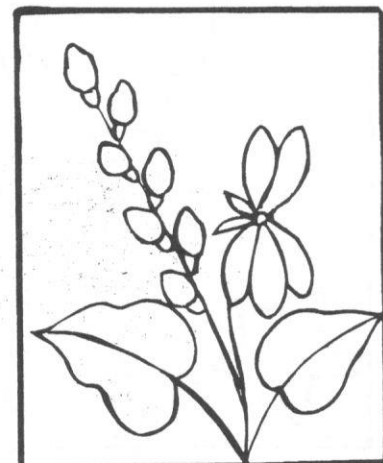
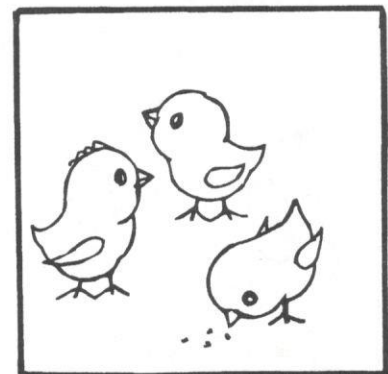
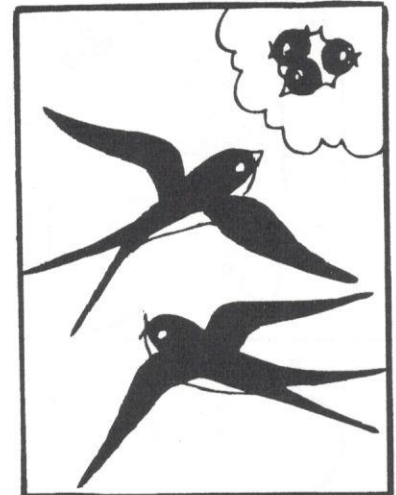
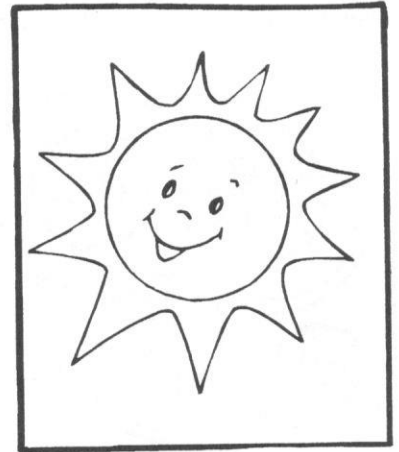
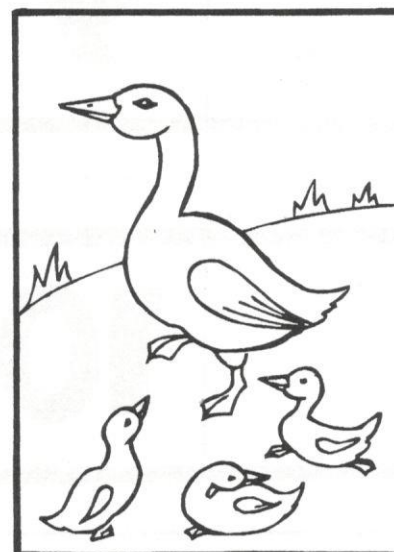
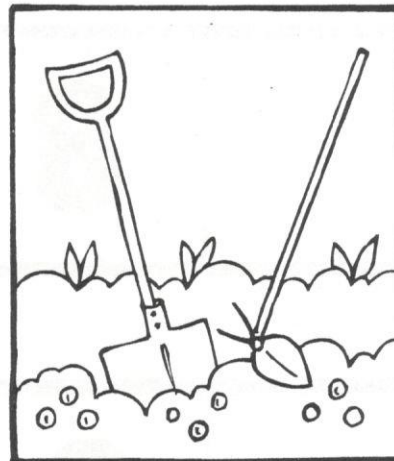
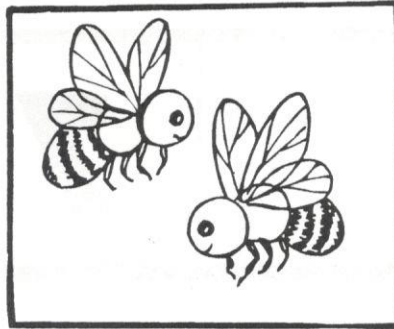
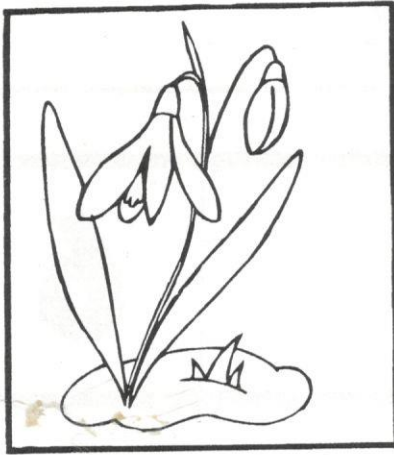


JARO

ZIMA KONČÍ, JARO JE TU,
SLUNCE PROBRALO SE K SVĚTU.
BUDÍ KVĚTY, ZVÍŘÁTKA,
VSTÁVÁ SPÍČÍ ZAHRÁDKA.



• Popiš charakteristické znaky jara. Který obrázek patří do jiného ročního období?